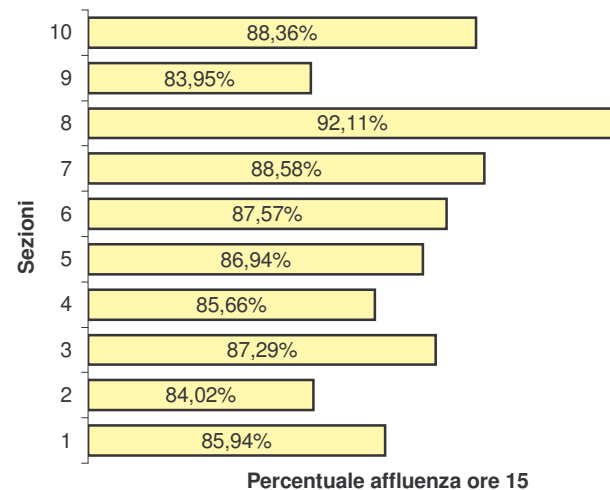


**Affluenza alle Urne**

**Senato della Repubblica**

Sez	Iscritti	Votanti		Percentuale affluenza	
		Ore 15		% ore 15	
1	768	660		85,94%	
2	194	163		84,02%	
3	590	515		87,29%	
4	739	633		85,66%	
5	735	639		86,94%	
6	756	662		87,57%	
7	832	737		88,58%	
8	114	105		92,11%	
9	673	565		83,95%	
10	979	865		88,36%	
<b>Tot</b>	<b>6380</b>	<b>5544</b>		<b>86,90%</b>	



**Camera dei Deputati**

Sez	Iscritti	Votanti				Percentuale affluenza			
		Ore 12	Ore 19	Ore 21	Ore 15	% ore 12	% ore 19	% ore 21	% ore 15
1	821	145	445	563	705	17,66%	54,20%	68,57%	85,87%
2	210	44	122	139	176	20,95%	58,10%	66,19%	83,81%
3	629	151	368	457	549	24,01%	58,51%	72,66%	87,28%
4	793	150	438	565	678	18,92%	55,23%	71,25%	85,50%
5	802	203	468	597	696	25,31%	58,35%	74,44%	86,78%
6	824	153	487	606	724	18,57%	59,10%	73,54%	87,86%
7	893	154	511	652	791	17,25%	57,22%	73,01%	88,58%
8	132	21	70	106	122	15,91%	53,03%	80,30%	92,42%
9	706	110	406	496	596	15,58%	57,51%	70,25%	84,42%
10	1074	209	622	778	945	19,46%	57,91%	72,44%	87,99%
<b>Tot</b>	<b>6884</b>	<b>1340</b>	<b>3937</b>	<b>4959</b>	<b>5982</b>	<b>19,47%</b>	<b>57,19%</b>	<b>72,04%</b>	<b>86,90%</b>

